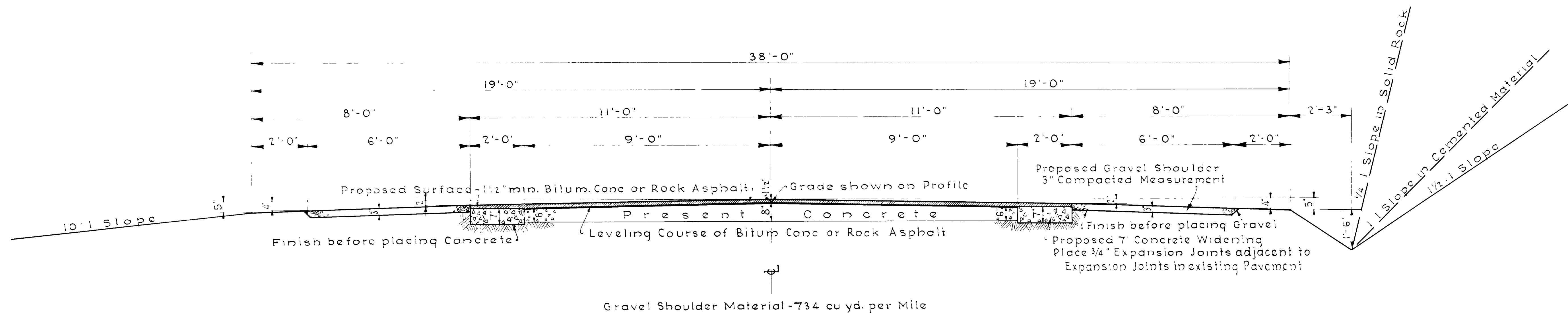
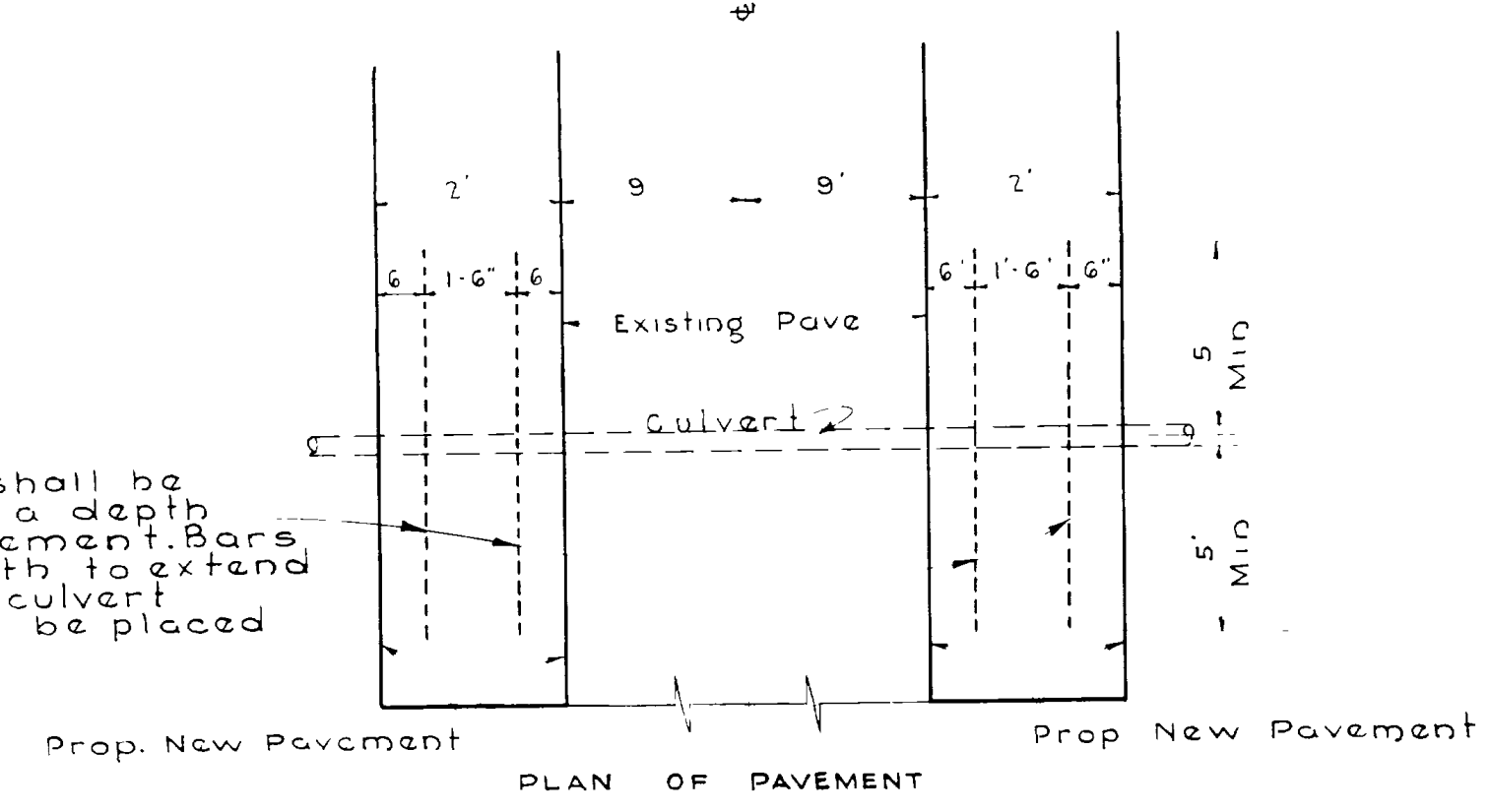


# TYPICAL CROSS SECTION

FED. ROAD DIST. NO.	STATE	FED. AID PROJ. A.C.	FISCAL YEAR	SHEET NO.	TOTAL SHEETS
12	UTAH			2	



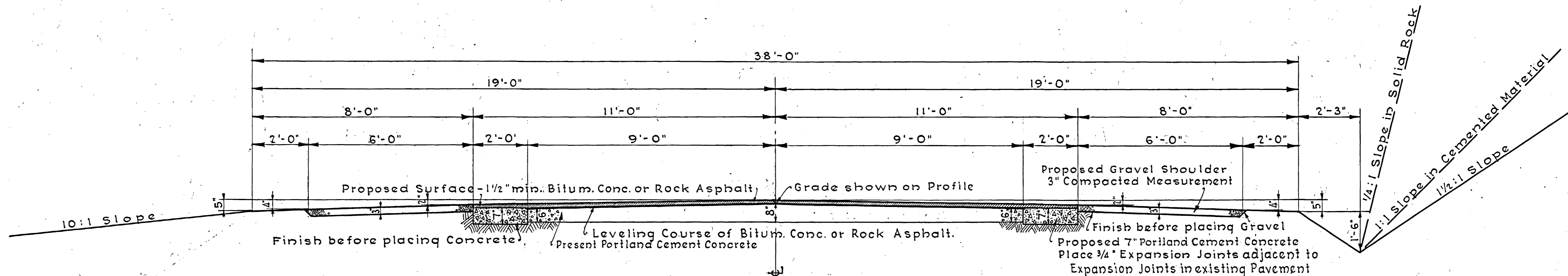
1/2" Deformed steel bars shall be placed over all culverts at a depth of 3" from top of new pavement. Bars shall be of sufficient length to extend at least 5' on each side of culvert. No contraction joints shall be placed over bars.



USED ON	UTAH STATE ROAD COMMISSION
F. A. P. NO.	SALT LAKE CITY - UTAH H. S. KEAR CHIEF ENGINEER
11-B	1 1/2" BITUMINOUS CONCRETE OR ROCK ASPHALT SURFACE ON 22' CONCRETE BASE 8' SHOULDERS
DESIGNED BY	SCALE 1" = 2'-0"
DRAWN BY	ISSUED
CHECKED BY	APPROVED
EXAMINED BY	
	TYPE

# TYPICAL CROSS SECTION

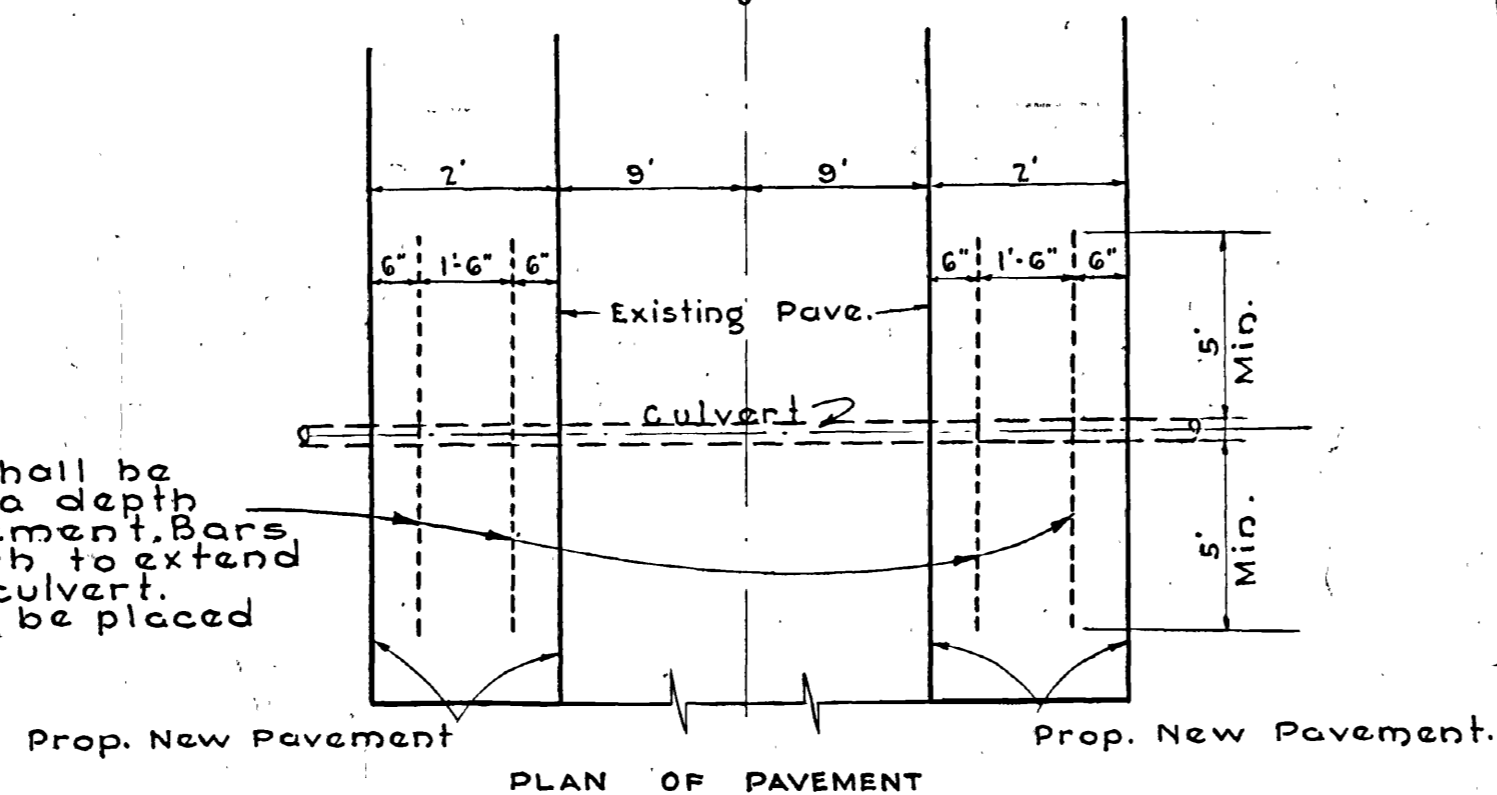
FED. ROAD DIST. NO.	STATE	FED. AID PROJ. NO.	FISCAL YEAR	SHEET NO.	TOTAL SHEETS
12	UTAH	114-B		2	



Gravel Shoulder Material - 734 cu.yd. per Mile

*1065 Kaw*

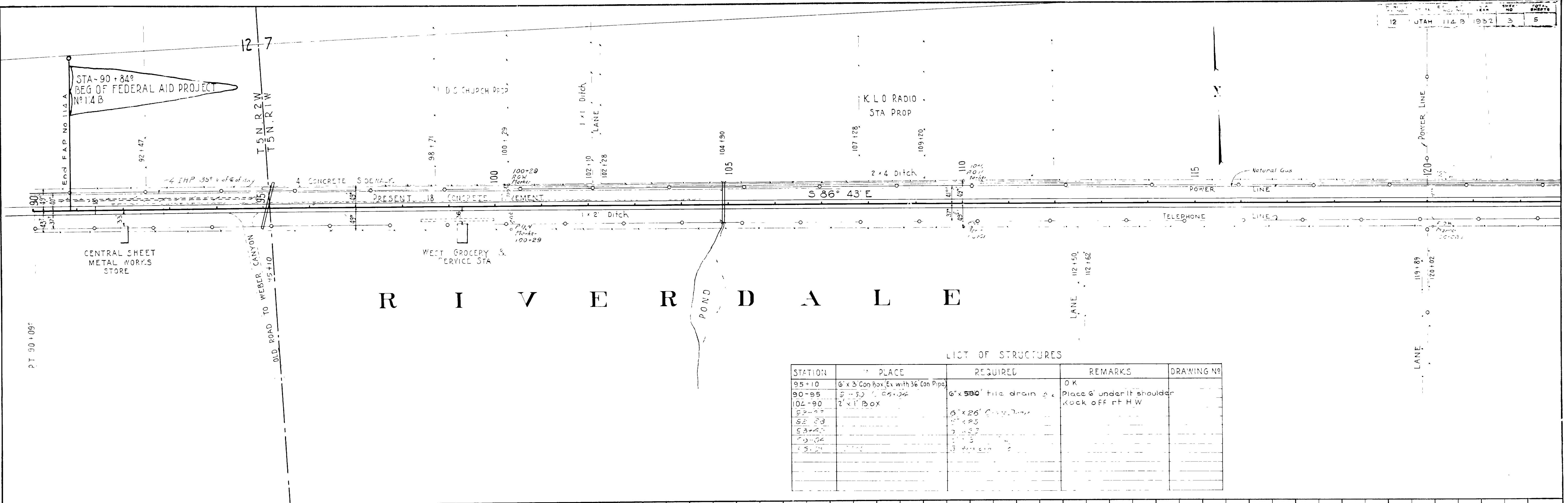
1/2" Deformed steel bars shall be placed over all culverts at a depth of 3" from top of new pavement. Bars shall be of sufficient length to extend at least 5' on each side of culvert. No contraction joints shall be placed over bars.



USED ON	UTAH STATE ROAD COMMISSION
F. A. P. NO.	SALT LAKE CITY - UTAH
114-B	H. S. KERR - CHIEF ENGINEER
	1 1/2" BITUMINOUS CONCRETE OR ROCK ASPHALT SURFACE ON 2" CEMENT CONC. BASE 8' SHOULDERS
DESIGNED BY	W. L. A.
DRAWN BY	A. M. G.
CHECKED BY	
SCALE	1" = 2'-0"
APPROVED	
TYPE	

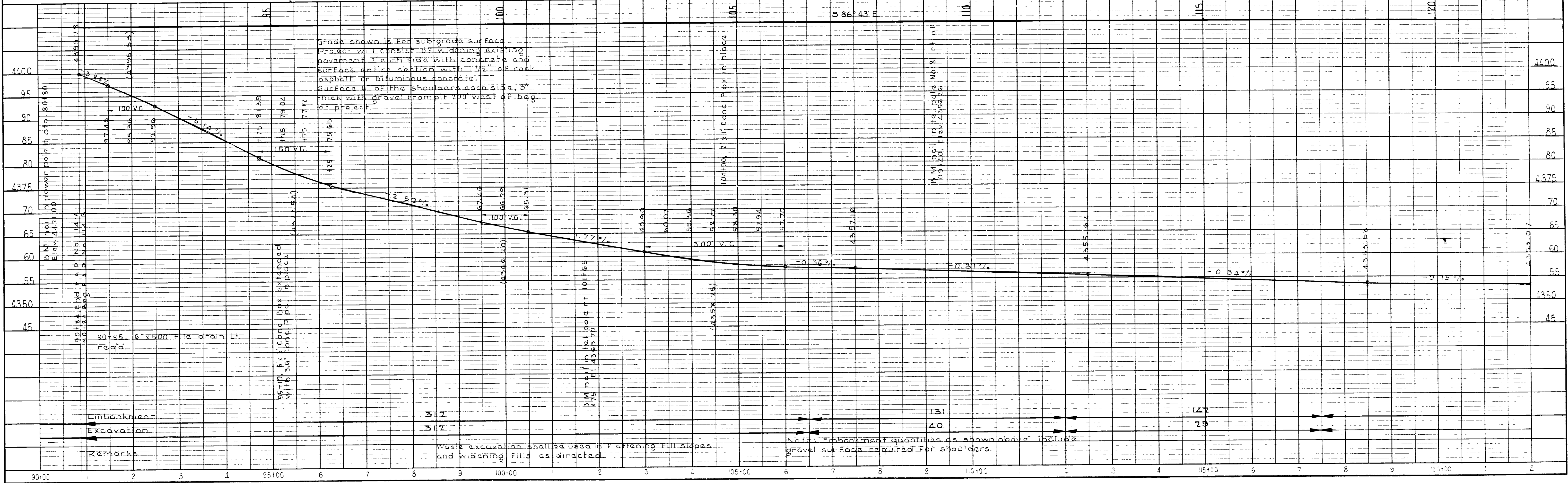
PLAN  
 SURVEYED G. L. LEWIS 1932  
 PLOTTED W. K. LITTLE 1937  
 NOTE BOOK ALIGNMENT CHECKED NO 2144  
 CHECKED L. L. LITTLE 1937

PROFILE  
 SURVEYED G. L. LEWIS 1932  
 PLOTTED W. K. LITTLE 1937  
 NOTE BOOK GRADES CHECKED NO 2145  
 CHECKED H. S. W. ZIGL 1937  
 STRUCTURE STATISTICS CHART



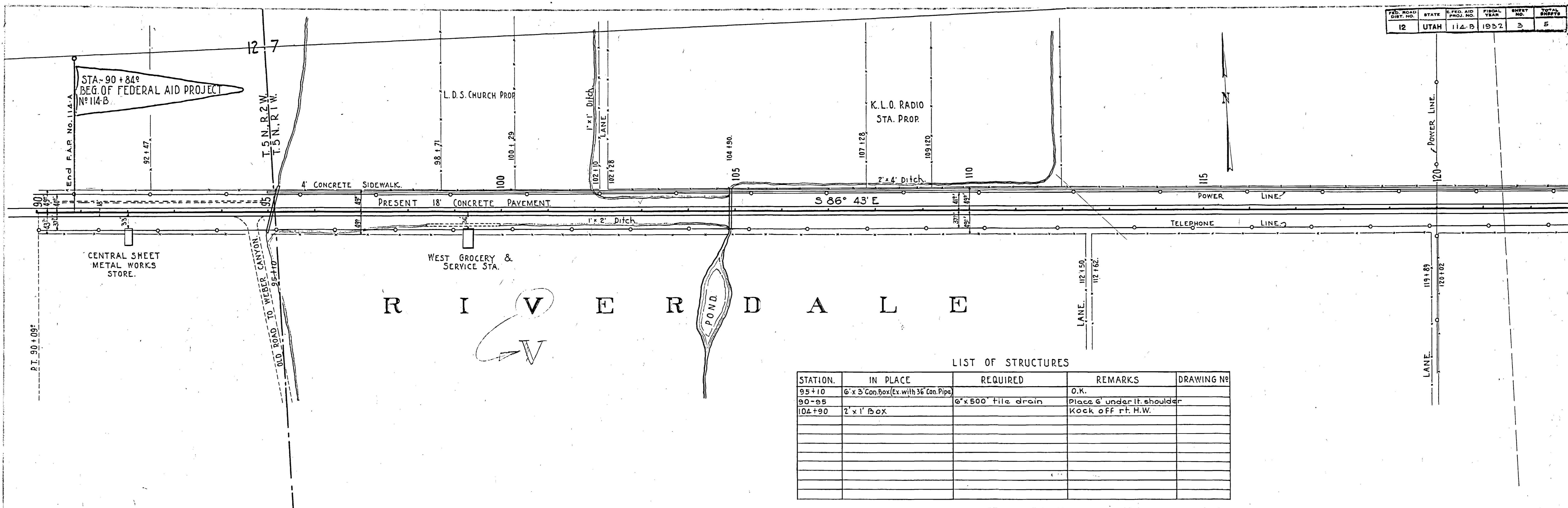
LIST OF STRUCTURES

STATION	PLACE	REQUIRED	REMARKS	DRAWING NO
95+10	6' x 3' Con Box, Ex with 36' Con Pipe		OK	
90-95	6' x 500' Tile drain	6' x 500' Tile drain	Place 6' under ft shoulder	
102+90	2' x 1' Box		Knock off rt H.W.	
92+28		6' x 26' Con Pipe		
92+28		6' x 26' Con Pipe		
92+28		6' x 26' Con Pipe		
92+28		6' x 26' Con Pipe		
92+28		6' x 26' Con Pipe		
92+28		6' x 26' Con Pipe		



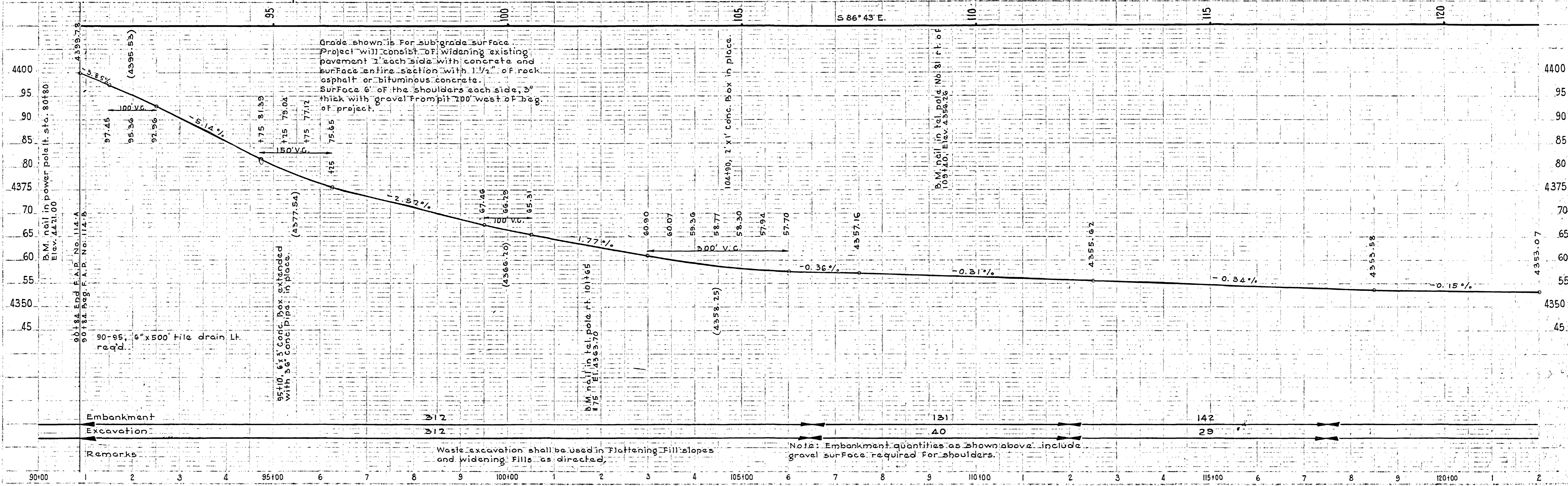


1932  
 G. Lewis  
 2144  
 1932  
 H. S. Wright  
 2145



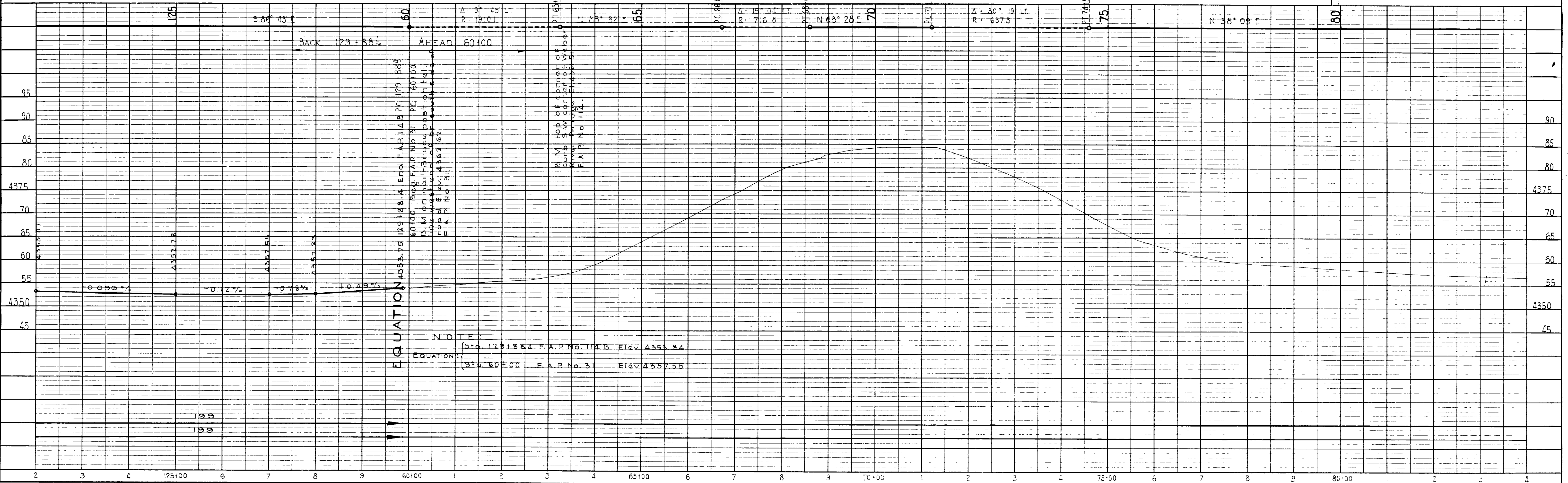
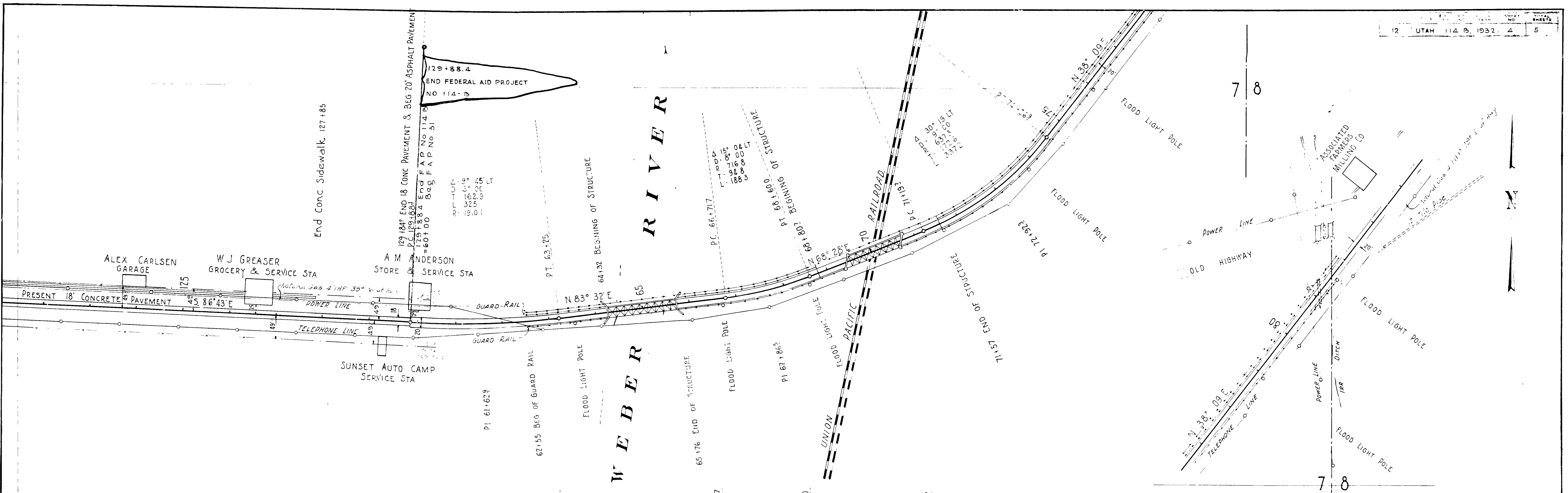
LIST OF STRUCTURES

STATION	IN PLACE	REQUIRED	REMARKS	DRAWING NO.
95+10	6' x 3' Con. Box (Ex. with 36" Con. Pipe)		O.K.	
90-95		6' x 500' tile drain	Place 6' under lt. shoulder	
104+90	2' x 1' Box		Kock off rt. H.W.	



PLAN	1932
SURVEYED	G. LEWIS
PLOTTED	C. WEST
ALIGNED	C. WEST
CHECKED	C. WEST
NO. 2144	TRACED
1932	

PROFILE	1932
SURVEYED	G. LEWIS
PLOTTED	H. S. WRIGHT
ALIGNED	H. S. WRIGHT
CHECKED	H. S. WRIGHT
NO. 2145	STRUCTURE NOT IN CHARGE
1932	

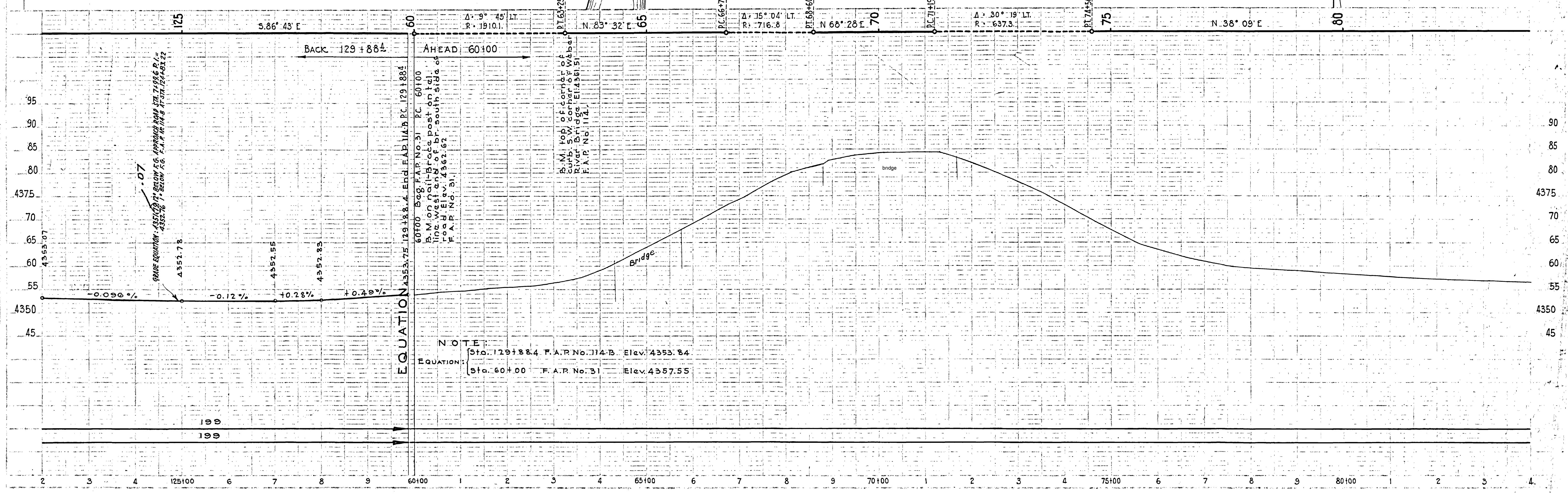
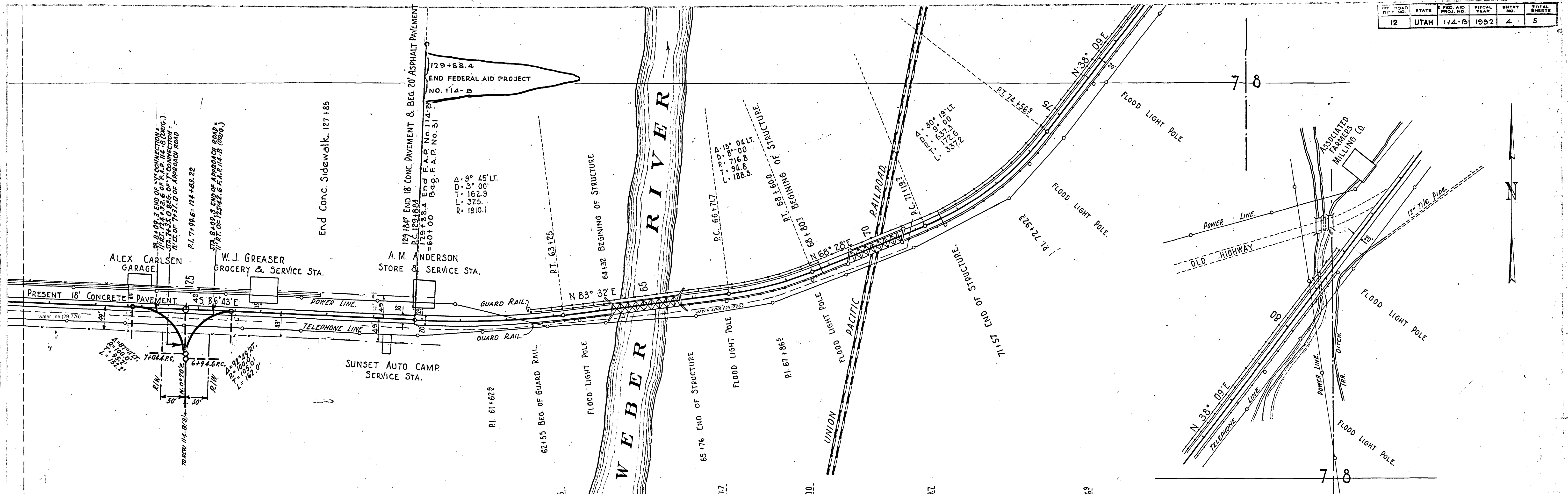




ROAD DIST. NO.	STATE	FED. AID PROJ. NO.	FISCAL YEAR	SHEET NO.	TOTAL SHEETS
12	UTAH	114-B	1932	4	5

1932  
G. LEWIS  
C. A. WEST  
C. LESSER  
1932

1932  
G. LEWIS  
C. LESSER  
H. S. WRIGHT  
1932



NOTE:  
EQUATION: { Sta. 129+88.4 F.A.P. No. 114-B Elev. 4353.84  
Sta. 60+00 F.A.P. No. 31 Elev. 4357.55

2145

2144 - TRACED

